

Remote control shafts

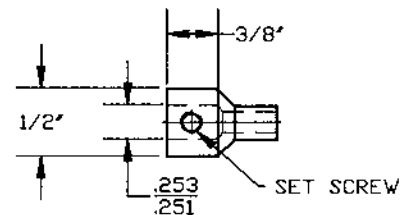
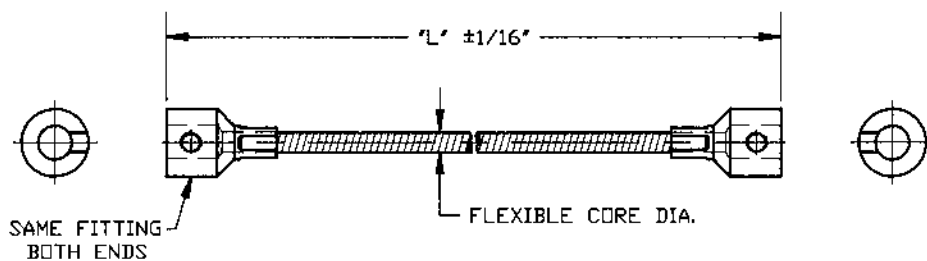
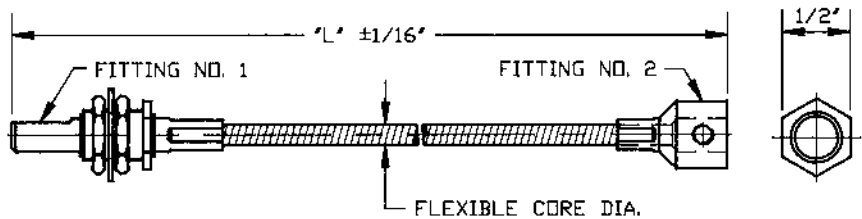


Complete standard shaft for light industrial applications. Includes core with squared ends, plastic casing with couplings equipped with cup nuts. Extreme ease of fitting.

Remote Control Assemblies for Panel Mounting (without casing)

Part number Extra flexibility	Flexible core diameter inch
B-200-2843	.130
B-200-2847	.150
B-200-2851	.180

For torque value of core see chart on page 23.



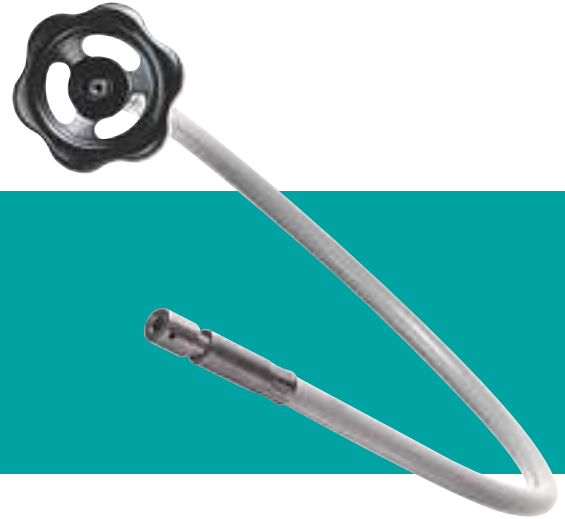
Remote Control Assemblies Extra flexible

Part number Extra flexibility	Flexible core diameter inch
B-200-2803	.130

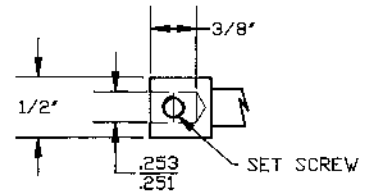
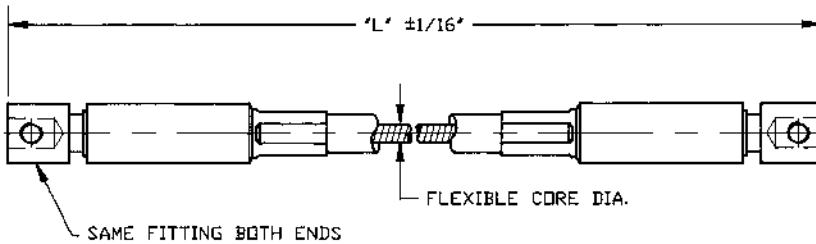
Remote Control Assemblies Normal flexibility

Part number Normal flexibility	Flexible core diameter inch
B-200-2813	.150
B-200-2823	.188
B-200-2832	.250

For torque value of core see chart on page 23.



Complete standard shaft for professional adjusting mechanism. Includes core with coupling (cylindrical drill with set screw), plastic casing and handle.



Power Drive Assemblies

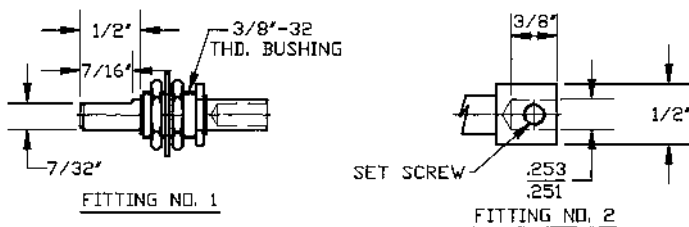
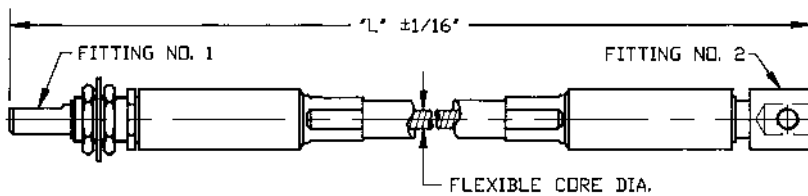
Part number		Flexible core diameter inch
Clockwise	Counterclockwise	
B-100-2703	B-100-2743	.130
B-100-2713	B-100-2753	.150

For torque ratings see page 23.

Remote Control Assemblies

Part number	Flexible core diameter inch
B-100-2903	.130
B-100-2913	.150

For torque ratings see page 23.



Remote Control Assemblies for Panel Mounting (with casing)

Part number	Flexible core diameter inch
B-100-2943	.130
B-100-2947	.150
B-100-2951	.180

For torque ratings see page 23.